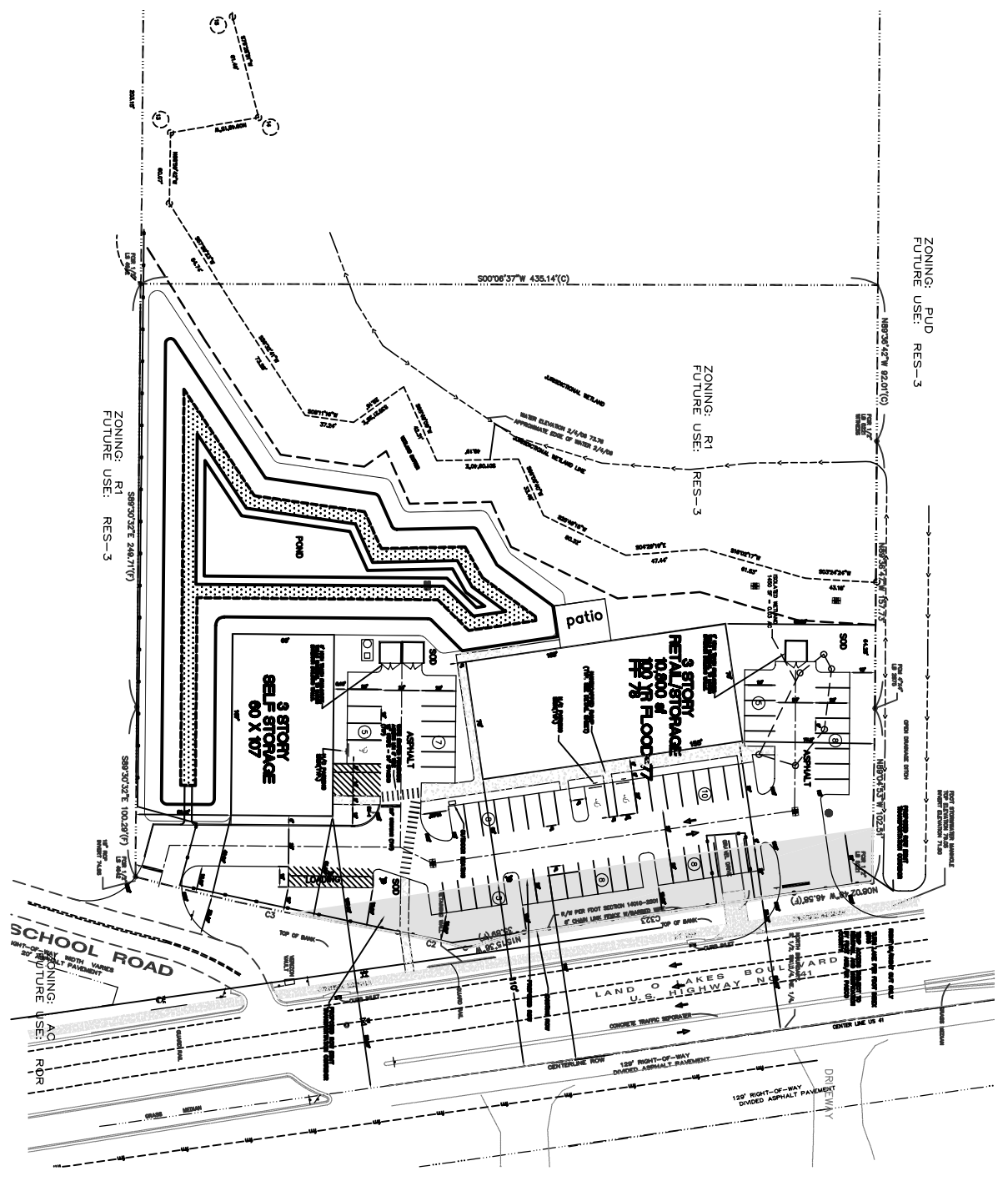


ZONING: PUD  
FUTURE USE: RES-3

ZONING: R1  
FUTURE USE: RES-3

ZONING: R1  
FUTURE USE: RES-3



- STIPPLING NOTES**
1. TYPICAL STIPPLING SHALL BE STIPPLE WITH 1/8" SPACING.
  2. SEE DETAILS FOR HATCHING PATTERNS.
  3. TYPICAL STIPPLE SHALL BE 2" SPACING.

- PROPOSED CONSTRUCTION NOTES:**
1. ALL CONSTRUCTION SHALL BE IN ACCORDANCE WITH THE LATEST EDITIONS OF THE FOLLOWING:
  2. THE 2012 INTERNATIONAL RESIDENTIAL CODE BOOK.
  3. THE 2012 INTERNATIONAL BUILDING CODE.
  4. THE 2012 INTERNATIONAL PLUMBING AND MECHANICAL CODE.
  5. THE 2012 INTERNATIONAL ELECTRICAL CODE.
  6. THE 2012 INTERNATIONAL FIRE AND SAFETY CODE.
  7. THE 2012 INTERNATIONAL SOIL AND FOUNDATION CODE.
  8. THE 2012 INTERNATIONAL ENERGY CONSERVATION CODE.
  9. THE 2012 INTERNATIONAL SCHEDULING CODE.
  10. THE 2012 INTERNATIONAL SIGN CODE.
  11. THE 2012 INTERNATIONAL SYMBOLS CODE.
  12. THE 2012 INTERNATIONAL UNIFORM CODES AND CONVENTIONS.
  13. THE 2012 INTERNATIONAL UNIT CONVERSION TABLE.
  14. THE 2012 INTERNATIONAL SYSTEM OF UNITS.
  15. THE 2012 INTERNATIONAL SYSTEM OF UNITS CONVERSION TABLE.
  16. THE 2012 INTERNATIONAL SYSTEM OF UNITS CONVERSION TABLE.
  17. THE 2012 INTERNATIONAL SYSTEM OF UNITS CONVERSION TABLE.
  18. THE 2012 INTERNATIONAL SYSTEM OF UNITS CONVERSION TABLE.
  19. THE 2012 INTERNATIONAL SYSTEM OF UNITS CONVERSION TABLE.
  20. THE 2012 INTERNATIONAL SYSTEM OF UNITS CONVERSION TABLE.

- SIGN LEGEND**
- | NO. | TEXT OR SYMBOL         | SIZE      |
|-----|------------------------|-----------|
| 1   | STOP SIGN              | 30" X 30" |
| 2   | YIELD SIGN             | 30" X 30" |
| 3   | NO LEFT TURN SIGN      | 30" X 30" |
| 4   | NO RIGHT TURN SIGN     | 30" X 30" |
| 5   | NO U-TURN SIGN         | 30" X 30" |
| 6   | NO THROUGH TRUCKS SIGN | 30" X 30" |
| 7   | NO TRUCKS SIGN         | 30" X 30" |
| 8   | NO MOTORCYCLES SIGN    | 30" X 30" |
| 9   | NO BICYCLES SIGN       | 30" X 30" |
| 10  | NO PEDESTRIANS SIGN    | 30" X 30" |
| 11  | NO HORSES SIGN         | 30" X 30" |
| 12  | NO CARS SIGN           | 30" X 30" |
| 13  | NO MOTORCYCLES SIGN    | 30" X 30" |
| 14  | NO BICYCLES SIGN       | 30" X 30" |
| 15  | NO PEDESTRIANS SIGN    | 30" X 30" |
| 16  | NO HORSES SIGN         | 30" X 30" |
| 17  | NO CARS SIGN           | 30" X 30" |
| 18  | NO MOTORCYCLES SIGN    | 30" X 30" |
| 19  | NO BICYCLES SIGN       | 30" X 30" |
| 20  | NO PEDESTRIANS SIGN    | 30" X 30" |
| 21  | NO HORSES SIGN         | 30" X 30" |
| 22  | NO CARS SIGN           | 30" X 30" |
| 23  | NO MOTORCYCLES SIGN    | 30" X 30" |
| 24  | NO BICYCLES SIGN       | 30" X 30" |
| 25  | NO PEDESTRIANS SIGN    | 30" X 30" |
| 26  | NO HORSES SIGN         | 30" X 30" |
| 27  | NO CARS SIGN           | 30" X 30" |
| 28  | NO MOTORCYCLES SIGN    | 30" X 30" |
| 29  | NO BICYCLES SIGN       | 30" X 30" |
| 30  | NO PEDESTRIANS SIGN    | 30" X 30" |
| 31  | NO HORSES SIGN         | 30" X 30" |
| 32  | NO CARS SIGN           | 30" X 30" |
| 33  | NO MOTORCYCLES SIGN    | 30" X 30" |
| 34  | NO BICYCLES SIGN       | 30" X 30" |
| 35  | NO PEDESTRIANS SIGN    | 30" X 30" |
| 36  | NO HORSES SIGN         | 30" X 30" |
| 37  | NO CARS SIGN           | 30" X 30" |
| 38  | NO MOTORCYCLES SIGN    | 30" X 30" |
| 39  | NO BICYCLES SIGN       | 30" X 30" |
| 40  | NO PEDESTRIANS SIGN    | 30" X 30" |
| 41  | NO HORSES SIGN         | 30" X 30" |
| 42  | NO CARS SIGN           | 30" X 30" |
| 43  | NO MOTORCYCLES SIGN    | 30" X 30" |
| 44  | NO BICYCLES SIGN       | 30" X 30" |
| 45  | NO PEDESTRIANS SIGN    | 30" X 30" |
| 46  | NO HORSES SIGN         | 30" X 30" |
| 47  | NO CARS SIGN           | 30" X 30" |
| 48  | NO MOTORCYCLES SIGN    | 30" X 30" |
| 49  | NO BICYCLES SIGN       | 30" X 30" |
| 50  | NO PEDESTRIANS SIGN    | 30" X 30" |

CIVIL ENGINEERS  
LAND PLANNERS  
LANDSCAPE ARCHITECTS

2820 Marquess Court  
Tomball, TX 77375  
Tel: 409/271-8000  
Fax: 409/276-3751

Project Manager:  
K. FISCHER

Engineer:  
KTC

Technician:  
KOH

**STRATEGIC DEVELOPMENT**

**LAKE THOMAS CROSSINGS**

8086 LAND O LAKES BLVD  
PASCO COUNTY, FLORIDA

**SITE PLAN**

DATE: **JUNE 10, 2006**

PROJECT: **480-008.07**

SCALE: **1"=30'**

DRAWING NUMBER: **48000000**

SHEET NUMBER: **3**